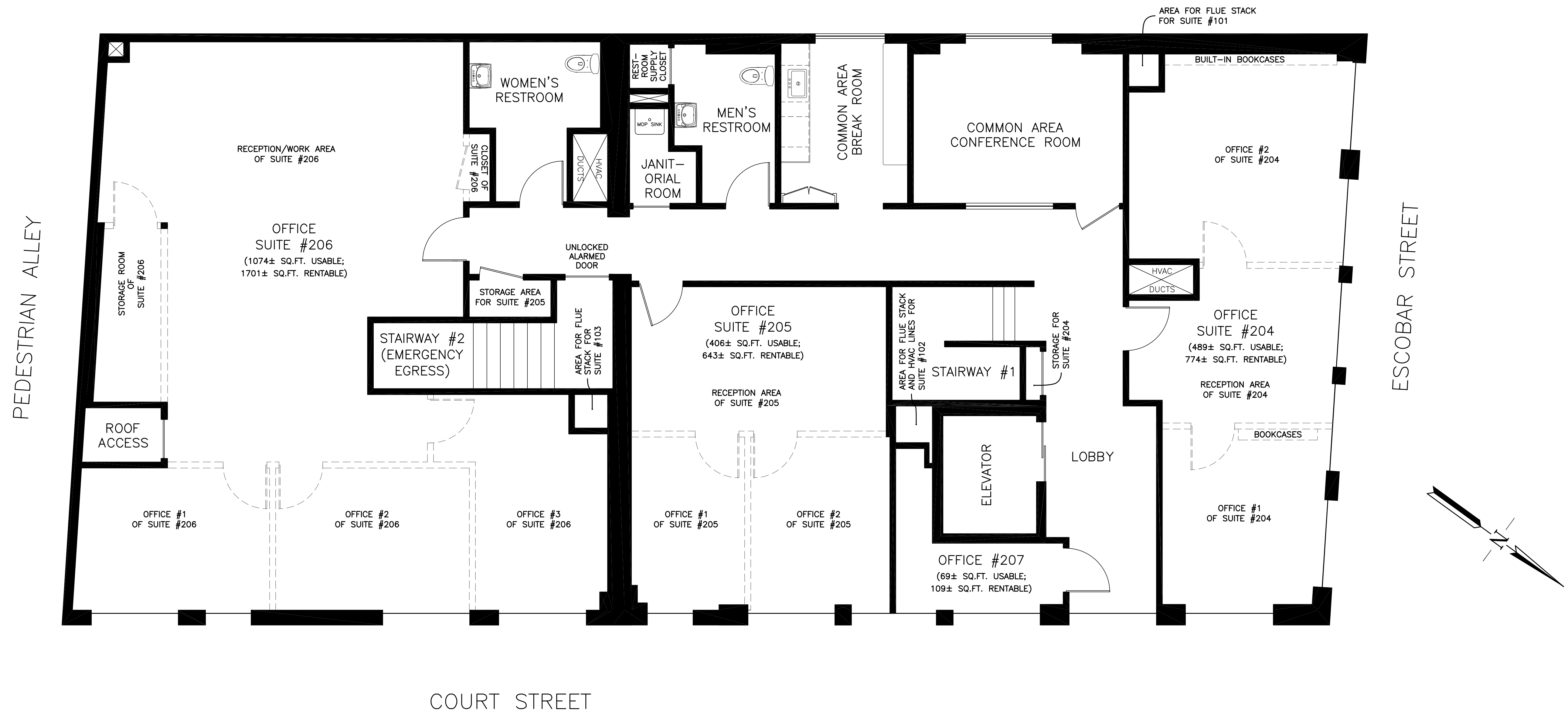


# 610 COURT STREET

## SECOND STORY FLOOR PLAN



NOTE: THIS DRAWING IS SUBJECT TO REVISION DUE TO "CHANGE ORDERS" THAT MAY OCCUR DURING CONSTRUCTION.

"SOUTHPORT LAND AND COMMERCIAL COMPANY" and "SOUTHPORT LAND" are Registered in U.S. Patent and Trademark Office.

**SOUTHPORT LAND AND COMMERCIAL COMPANY**

CALIFORNIA 94553-0997 (925) 372-7798

P.O. BOX 1997 INCORPORATED JUNE 15, 1861 MARTINEZ, CALIFORNIA'S OLDEST STOCK CORPORATION

© 2013-2015

JOB NO.	610-2
SCALE	N/A
DATE	5/09/15
REVISION NO.	06-B
DRAWING NO.	
SH OF	2 2