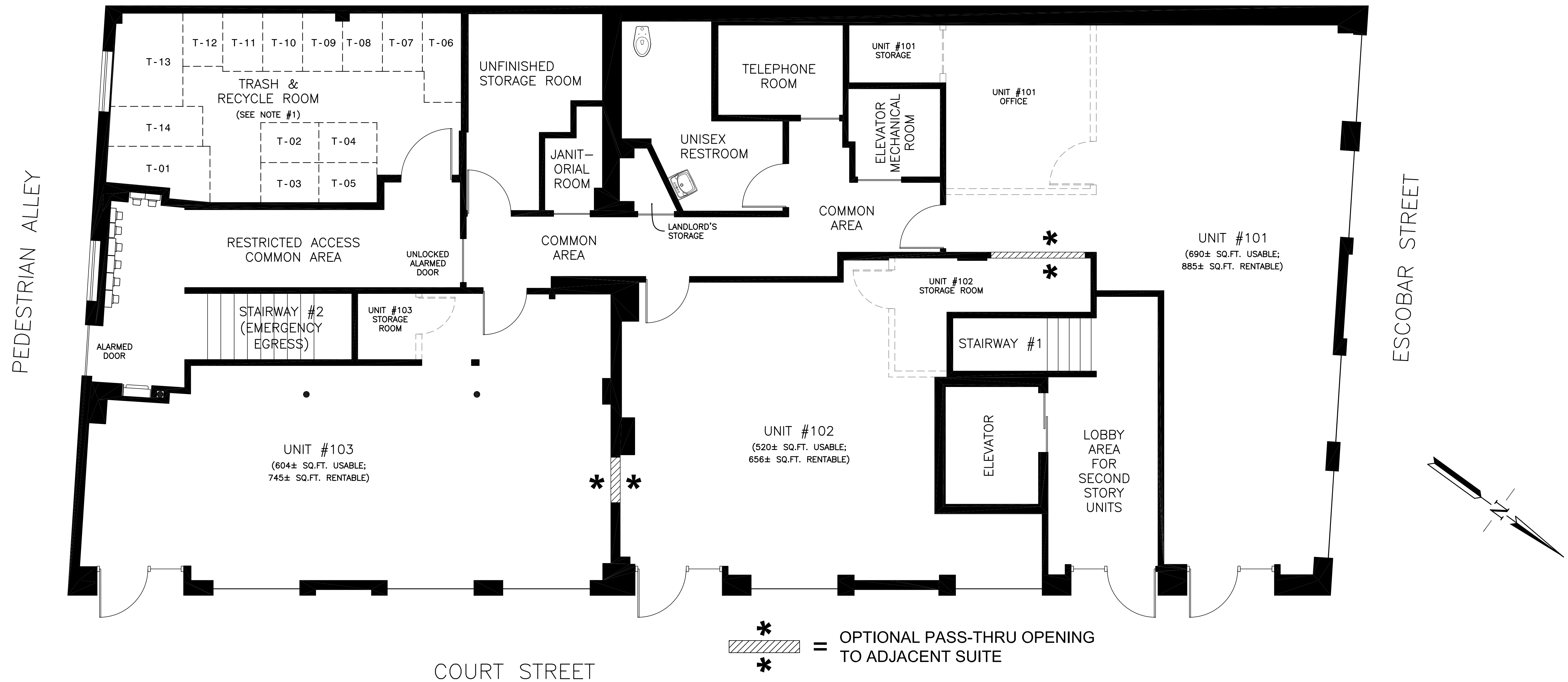


610 COURT STREET

FIRST STORY FLOOR PLAN

NOTE #1:
EACH OF THE SEVEN UNITS IN THE BUILDING IS TO BE ASSIGNED ONE SPACE FOR TRASH AND ONE SPACE FOR RECYCLING, UNLESS OTHERWISE STATED IN THE LEASE.



NOTE: THIS DRAWING IS SUBJECT TO REVISION DUE TO "CHANGE ORDERS" THAT MAY OCCUR DURING CONSTRUCTION.

"SOUTHPORT LAND AND COMMERCIAL COMPANY" and "SOUTHPORT LAND" are Registered in U.S. Patent and Trademark Office.

INCORPORATED JUNE 15, 1861

SOUTHPORT LAND AND COMMERCIAL COMPANY

CALIFORNIA 94553-0997 (925) 372-7798

P.O. BOX 1997 MARTINEZ, CALIFORNIA'S OLDEST STOCK CORPORATION

© 2013-2017

JOB NO.	610-1
SCALE	N/A
DATE	05/01/17
REVISION NO.	06
DRAWING NO.	
SH	OF
1	2