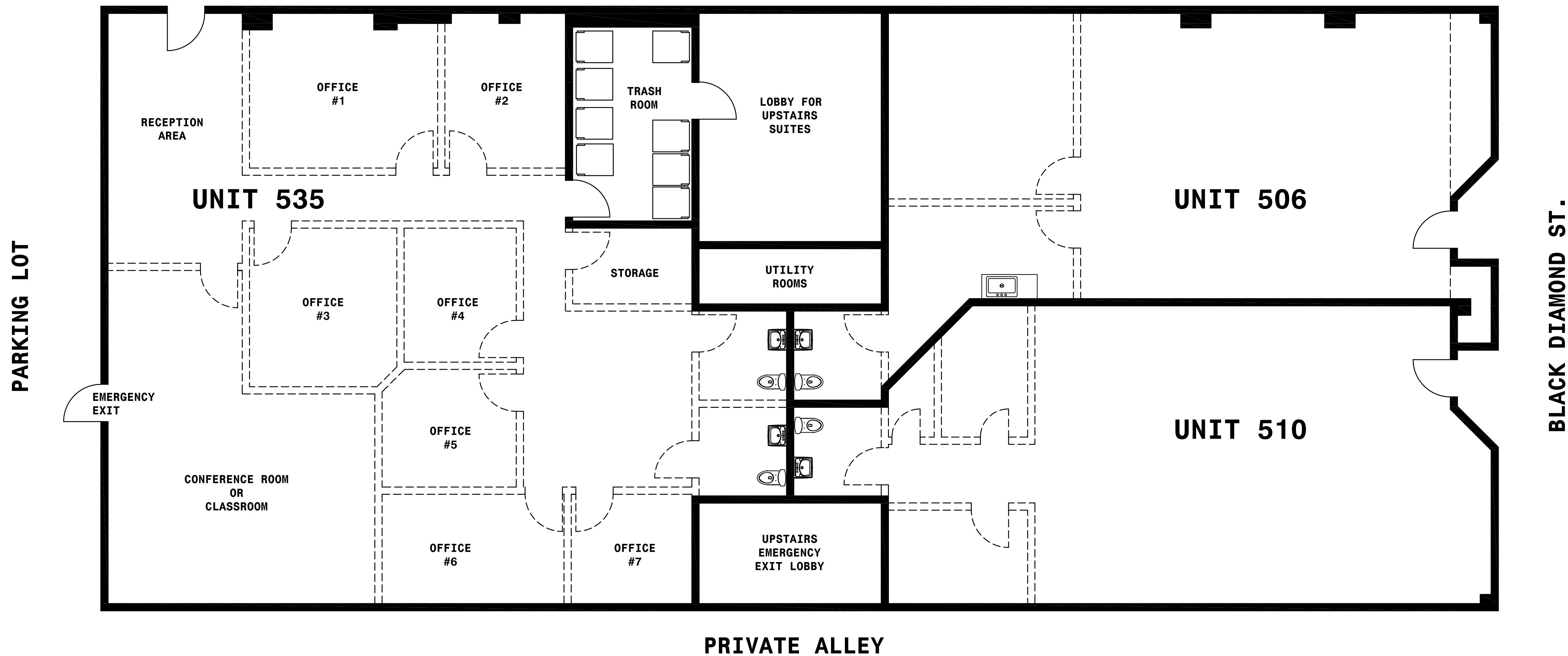


LEPORI BUILDING

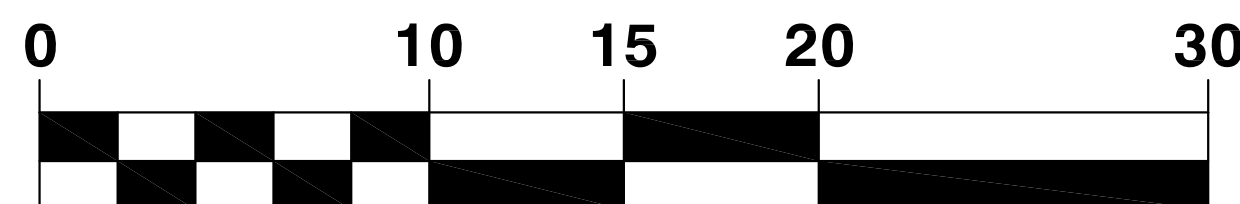
STREET LEVEL FLOOR PLAN

535 MARINA BLVD.; 506 & 510 BLACK DIAMOND ST.

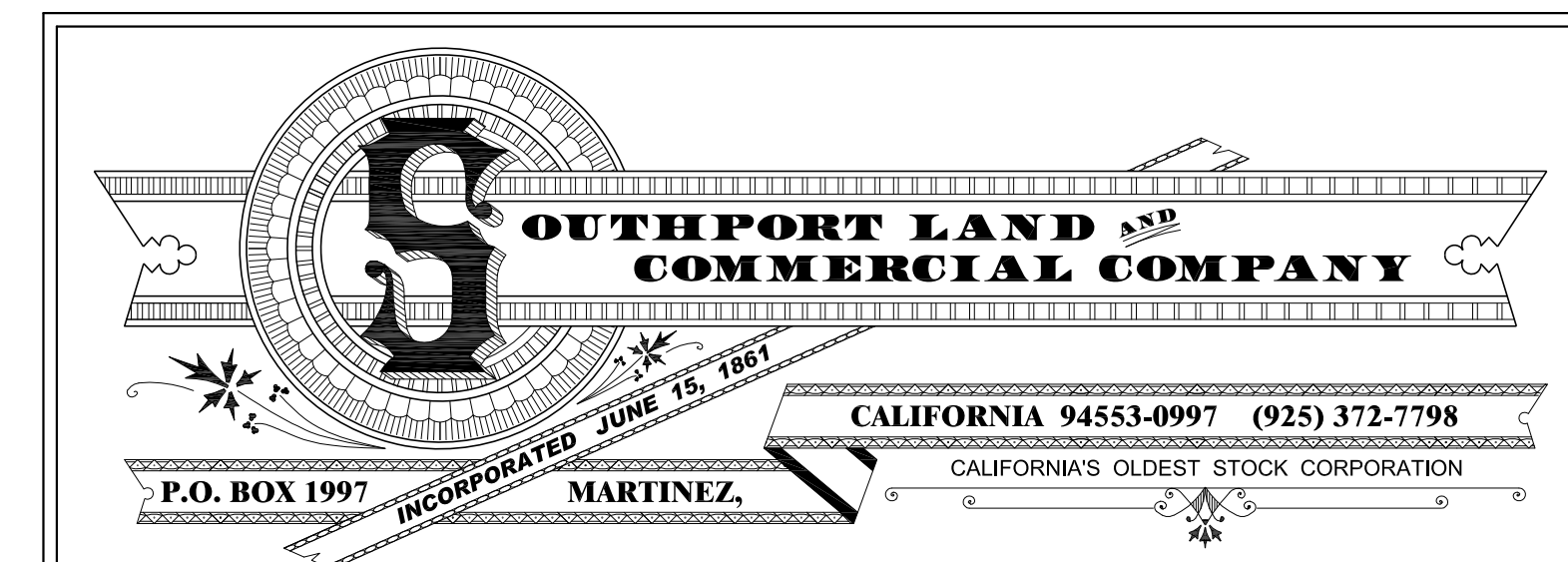
PLAZA AT MARINA BLVD.
AND FIFTH ST.



GRAPHIC SCALE IN FEET
(APPROXIMATE)



FLOOR PLAN DISCLAIMER AND ADVISORY: Although Southport Land and Commercial Company attempts to provide accurate data on all of its floor plans, the scale of the floor plan is approximate and the floor plan is for illustrative purposes only. While we do not doubt the accuracy of our floor plans, we make no guarantee, warranty or representation as to the accuracy and completeness of any of our floor plans. You or your advisors should not rely upon our floorplan, but instead should conduct a careful, independent investigation of the property to determine to your satisfaction that the space you are considering leasing, and all common areas, will fit your requirements.



© 2013 - 2020

JOB NO.	LEP-1
SCALE	N/A
DATE	04/23/20
REVISION NO.	05
DRAWING NO.	
SH	OF
1	1

"Southport Land and Commercial Company" and "Southport Land" are Registered in U.S. Patent and Trademark Office.