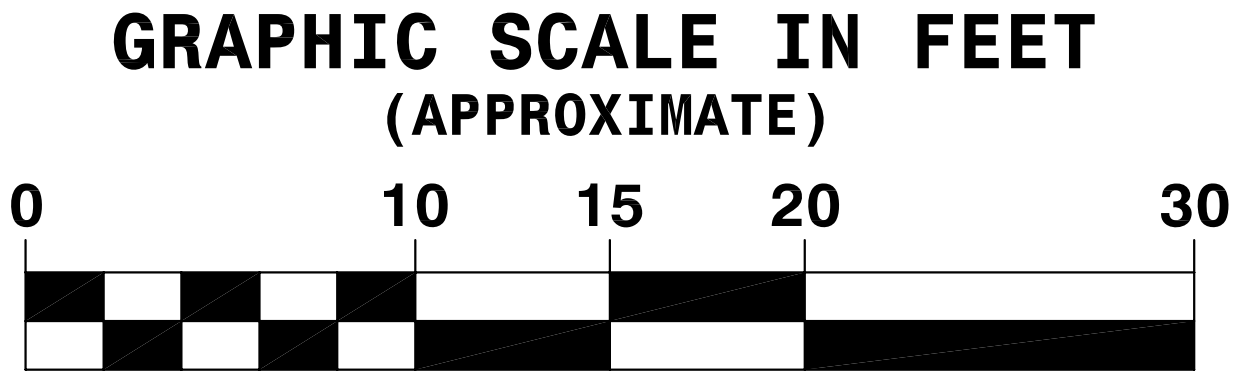
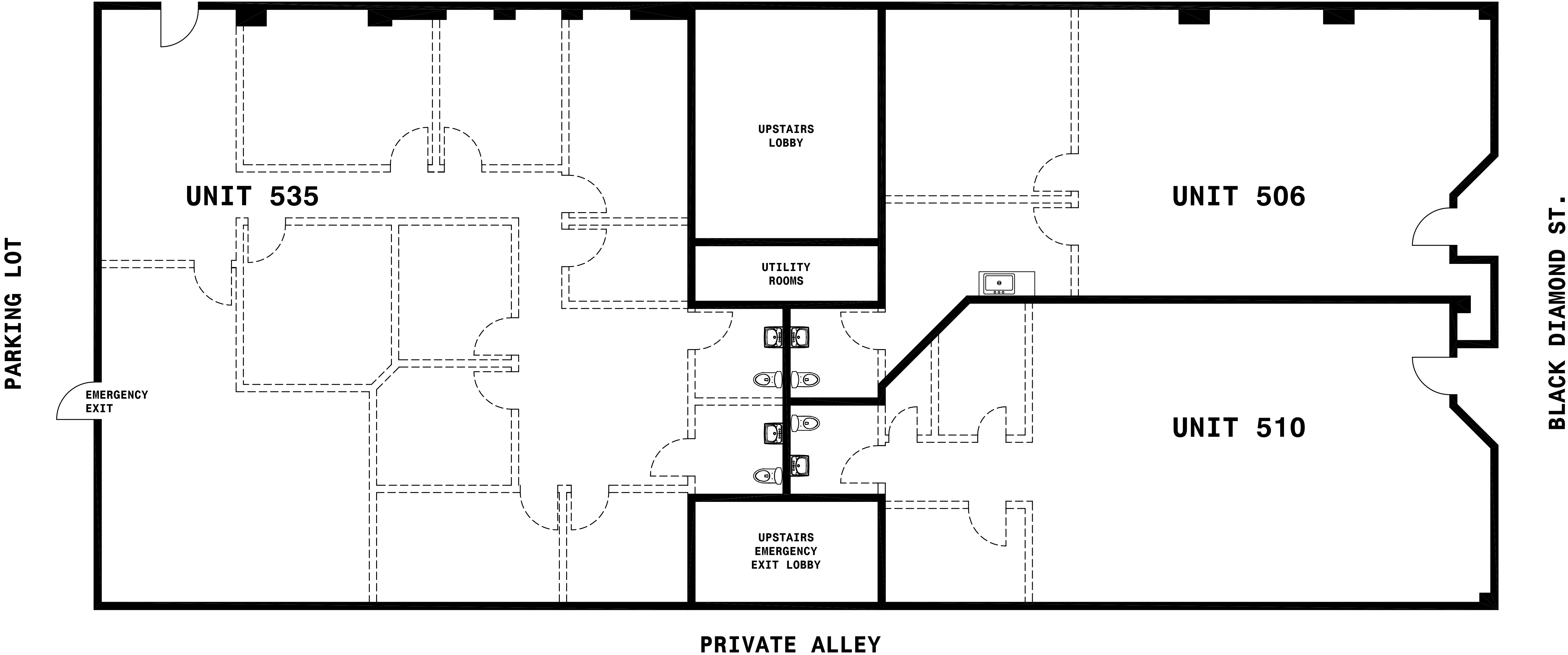


LEPORI BUILDING

STREET LEVEL FLOOR PLAN

535 MARINA BLVD.; 506 & 510 BLACK DIAMOND ST.

PLAZA AT MARINA BLVD.
AND FIFTH ST.



"Southport Land and Commercial Company" and "Southport Land" are Registered in U.S. Patent and Trademark Office.

SOUTHPORT LAND AND COMMERCIAL COMPANY
INCORPORATED JUNE 15, 1861
P.O. BOX 1997 MARTINEZ, CALIFORNIA 94553-0997 (925) 372-7798
CALIFORNIA'S OLDEST STOCK CORPORATION

© 2013

JOB NO.	LEP-1
SCALE	N/A
DATE	06/29/13
REVISION NO.	04
DRAWING NO.	
SH	OF
1	1

FLOOR PLAN DISCLAIMER AND ADVISORY:

Although Southport Land and Commercial Company attempts to provide accurate data on all of its floor plans, the scale of the floor plan is approximate and the floor plan is for illustrative purposes only. While we do not doubt the accuracy of our floor plans, we make no guarantee, warranty or representation as to the accuracy and completeness of any of our floor plans. You or your advisors should not rely upon our floor plan, but instead should conduct a careful, independent investigation of the property to determine to your satisfaction that the space you are considering leasing, and all common areas, will fit your requirements.